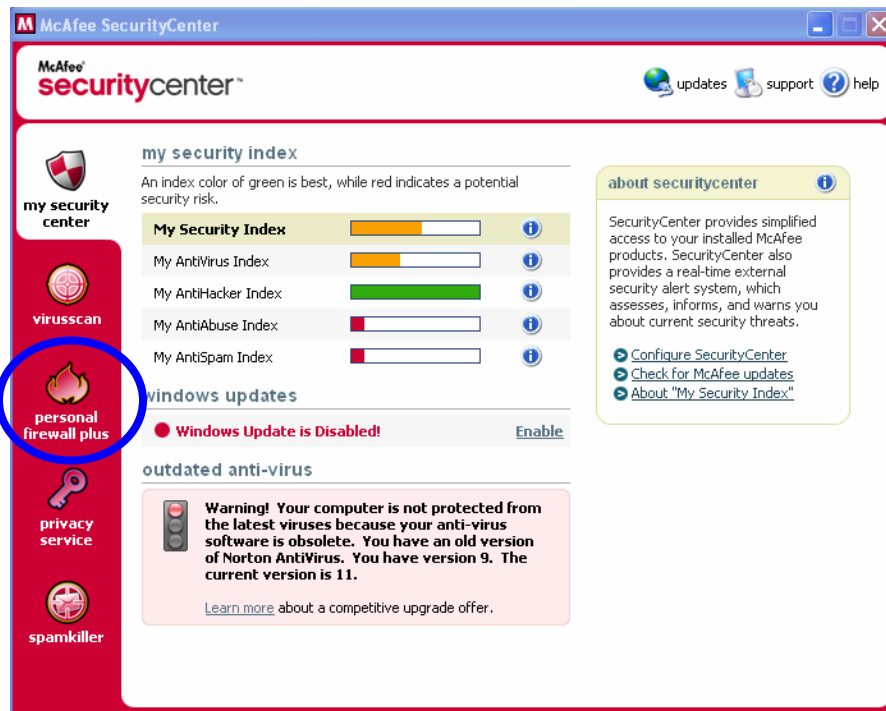
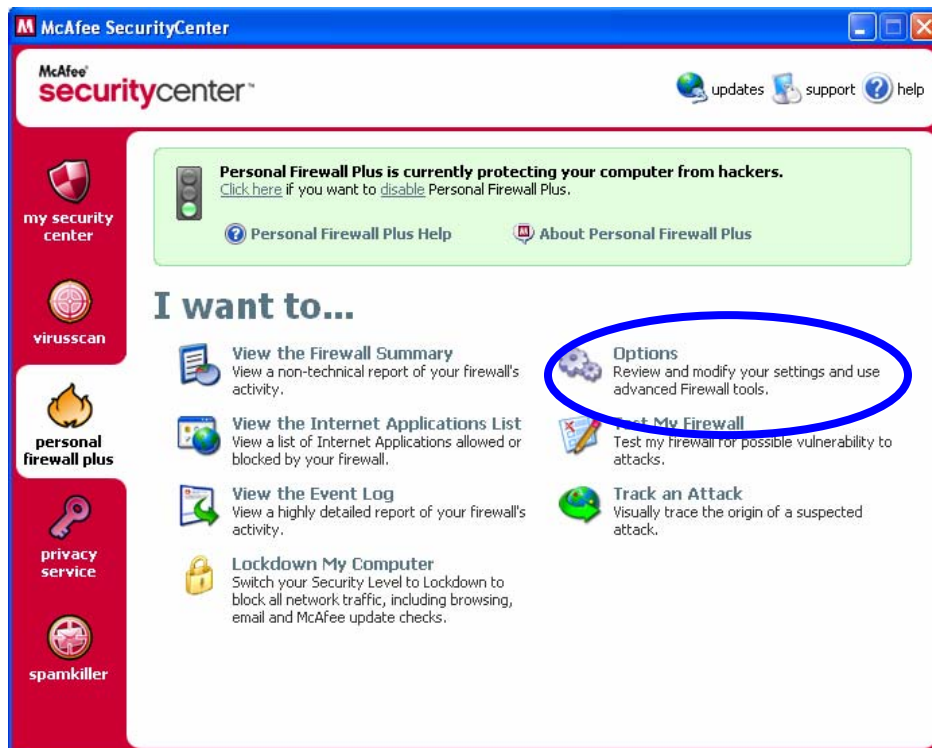


How to Modify a McAfee Firewall

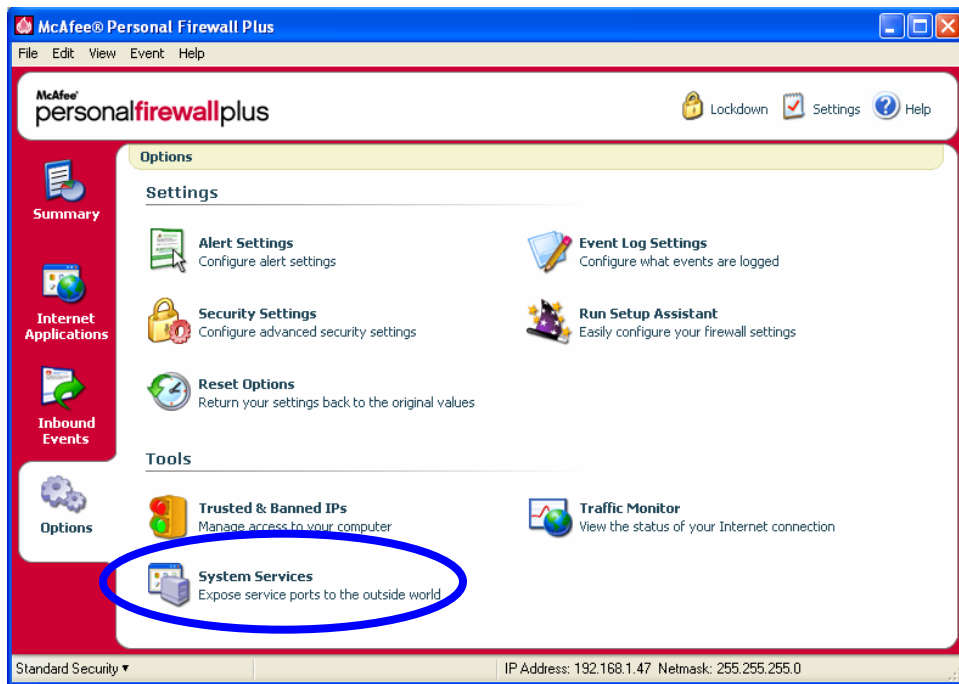
First, open the Security Center. Next go to the Personal Firewall Plus icon



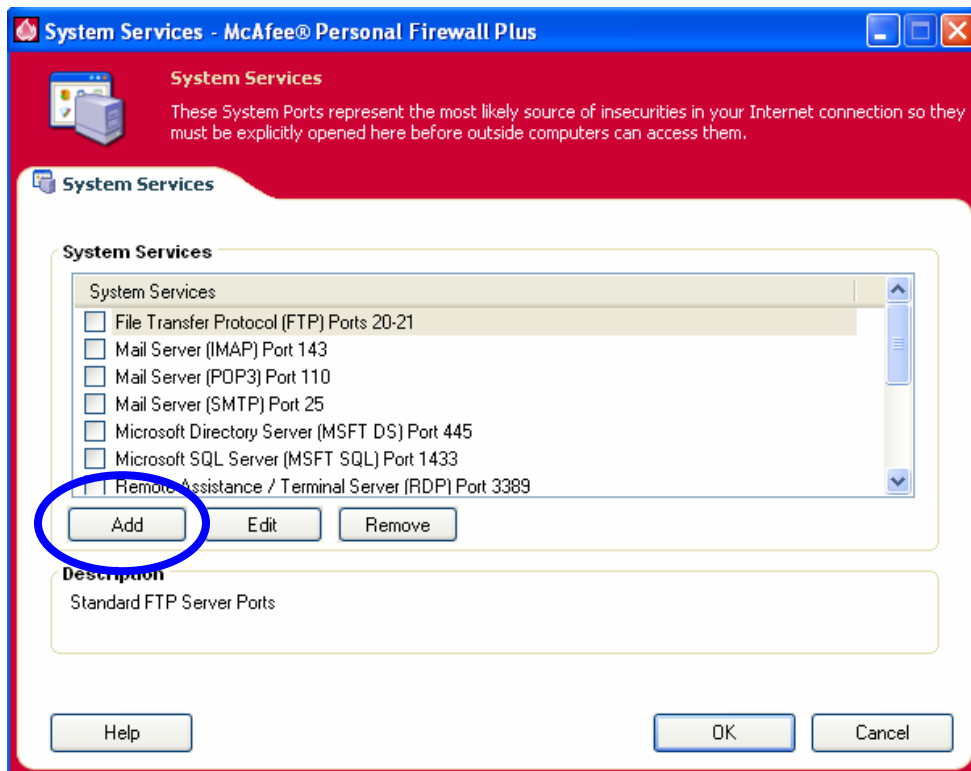
Next, click on the Options button



Click on the System Services icon:



On the System Services screen, click the Add button:



On the Edit Port Configuration, give the program a descriptive name, like ForexTrader. Next, add the ports for the platform in both the Incoming and Outgoing TCP/IP ports section. Please refer to the port guide to determine which ports to open. After this is complete, click the OK button.

Edit Port Configuration

Program name: ForexTrader

Program category:

Incoming TCP/IP ports: 1000 1999 3020

Outgoing TCP/IP ports: 1000 1999 3020

Incoming UDP ports:

Outgoing UDP ports:

Description:

OK Cancel Help

Port Guide

Java Platform	HTML Platform
1999	900
3020	3020
1000	1000